

# MDE/MDG17CS

MAYTAG® COMMERCIAL  
SUPER-CAPACITY DRYER



## LEGENDARY MAYTAG DEPENDABILITY

Maximizing your equipment investment for over a half century.



### FOR YOUR CUSTOMERS:

- Extra-Large 7.4 cu. ft. Capacity
- Easy-To-Operate Dial Control
- High Air Flow For Better Clothes Care
- Easy-To-Operate Coin Slide
- Machine In Use Light

### FOR YOUR OPERATION:

- TurboVent™ Technology—Better Performance On Long Vents
- Front Access For Easier Self Service
- Large-Capacity Metal Mesh Lint Filter
- Accepts A Variety Of Slides
- Reversible Side-Swing Door

### BUILT-TO-LAST™ FEATURES:

- Premium Porcelain-Enamel Top
- Four Roller Suspension With Permanently Lubricated Bearings
- Blower Guard Reduces Service Calls
- High Security Vault
- Reliable Electromechanical Controls
- Best Warranty in the Business—5 Years All Parts

LAUNDRY SOLUTIONS  
YOU CAN *DEPEND* ON.

FASTER DRYING WITH  
TURBOVENT™ TECHNOLOGY

visit [maytagcommerciallaundry.com](http://maytagcommerciallaundry.com)  
or call 800-662-3587



## OUR COMMITMENT TO DEPENDABLE QUALITY

At Maytag, we believe durable goods should remain just that. That's why every Maytag® product is constructed of the highest-quality materials and with the utmost in precision craftsmanship. It's also why we stand behind our equipment with solid service and support from our professional Maytag laundry suppliers. Simply put, when you choose Maytag® products, you ensure your peace of mind.



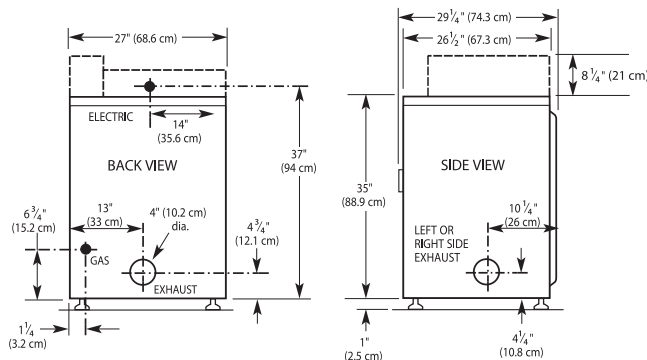
## MDE/MDG17CS

MAYTAG® COMMERCIAL SUPER-CAPACITY DRYER

## Maytag® Commercial Super-Capacity Dryer

### MECHANICAL COIN SLIDE-READY

DRYER SPECIFICATIONS	
<b>MODEL</b>	<b>MDE/MDG17CS</b>
<b>MOTOR</b>	
Single-phase, thermoprotected against overload, auto-reset	•
HP (kw)	.33 (.25)
<b>CAPACITY</b>	
Cu. ft. (liters)	7.4 (209.5)
<b>AIRFLOW</b>	
Gas models — cfm (cmm)	230 (6.5)
Electric models — cfm (cmm)	215 (6.1)
<b>TUMBLE SPEED</b>	
RPM	50 ± 1
<b>SOUND LEVEL (export model only)</b>	
Sound Pressure Level, Lpa (dba) (Kpa: +/- 10dba)	58
<b>ELECTRICAL REQUIREMENTS</b>	
MDE model — voltage	240V/60Hz*
MDG model — voltage	120V/60Hz
Export models — voltage	220-240V/50Hz
<b>BREAKER/FUSE REQUIREMENTS</b>	
MDE model — amps	30
MDG model — amps	15
MDE export model — amps	20
MDG export model — amps	10
<b>HEATER ELEMENT RATING — watts</b>	
Domestic models — watts	5,600
Export models — watts	4,600
<b>CANADIAN MODELS — watts</b>	
	5,250
<b>EXHAUST DUCT DIAMETER</b>	
In. (mm)	4 (101.6)**
<b>ELECTRONIC BURNER IGNITION</b>	
MDG models	•
<b>GAS RATING</b>	
MDG model — BTU/hr. (kcal/hr.)	24,000 (6,048)
<b>GAS INLET</b>	
MDG model — in.	¾ N.P.T.
<b>AUTOMATIC PRESSURE REGULATOR</b>	
MDG models	•
<b>ADJUSTABLE LEVELING LEGS</b>	
MDG models	•
<b>APPROXIMATE WEIGHT</b>	
Crated — lbs. (kg)	154 (69.9)
Uncrated — lbs. (kg)	140 (63.5)
<b>DIMENSIONS</b>	
Width — in. (mm)	27 (685.8)
Depth — in. (mm)	29.25 (743)
Height — in. (mm)	43.25 (1099)***
See specific instructions for proper installation. Because of continuous product improvement, Maytag reserves the right to change specifications without notice.	
*208-Volt electric element kit available.	
**Use 4" (101.6 mm) diameter rigid aluminum or galvanized steel duct. Never use plastic, non-metal or combustible duct.	
***Height at metercase.	



### MAXIMUM EXHAUST DUCT LENGTH PER NUMBER OF TURNS

Number Of 90° Turns



#### Rigid Metal Vent

	Box Hood and Louvered Style	Angled Hood Style
0	135 ft. (41.2 m)	129 ft. (39.3 m)
1	125 ft. (38.1 m)	119 ft. (36.3 m)
2	115 ft. (35.1 m)	109 ft. (33.2 m)
3	106 ft. (32.3 m)	100 ft. (30.5 m)
4	98 ft. (29.9 m)	92 ft. (28.0 m)

#### Flexible Metal Vent

	Box Hood and Louvered Style	Angled Hood Style
0	76 ft. (23.2 m)	62 ft. (18.9 m)
1	71 ft. (21.6 m)	57 ft. (17.4 m)
2	67 ft. (20.4 m)	53 ft. (16.2 m)
3	65 ft. (19.8 m)	51 ft. (15.6 m)
4	63 ft. (19.2 m)	49 ft. (14.9 m)



NEW YORK CITY M.E.A.



BEAB Approved



## 5 YEARS ON ALL PARTS

For a period from the date of original purchase through the time listed above, the designated parts that fail in normal commercial use will be repaired or replaced free of charge for the part itself, with the owner paying all other costs, including labor, transportation and customs duty. Chemical damage is excluded from all warranty coverage. See complete warranty for details.